



[www.rowingracice.com](http://www.rowingracice.com)

# Bulletin No. 1



**2021 WORLD ROWING UNDER 23 CHAMPIONSHIPS**  
**7. – 11. 7. 2021 | Račice, Czech Republic**



## Organizing **Committee**

Honorary President of the Organizing Committee

President of the Organizing Committee

Executive Director

FISA Liaison

Development Programme + Visa policy

Technical Manager

Catering

Accommodation & Accreditation

Transport

Awards Ceremony

Media + PR Manager

Course

Team Information Centre

Volunteers and Spectator Facilities

IT Services

Medical Centre

Audio/Video

Marketing Manager

**Jiří Kejval**

**Dušan Macháček**

**Pavel Šebesta**

**Zdena Norková**

**Josef Johánek**

**Martin Janků**

**Simona Hanousková**

**Lucie Makovičková**

**Zdeněk Krpata**

**Jana Hellerová**

**Alena Mašková**

**Pavel Dědek**

**René Vondrák**

**Jan Plachý**

**Stanislav Ježek**

**Veronika Bartoňová, MD**

**Josef Šinágl**

**Michal Kurfirst**

# Organizing **Committee**



## Dear Rowing Friends,

on behalf of the Czech Rowing Association and the Organizing Committee I would like to warmly invite you to the Labe Arena Račice for the 2021 World Rowing Under 23 Championships.

The history of world rowing championships in the Czech Republic, formerly Czechoslovakia, dates back to 1986 when it was the World Rowing Junior Championships - first international rowing event to be hosted in Račice. Another milestone was celebrated here in 2009 when we organized World Rowing U23 Championships. In 2015 we organized the European Rowing Junior Championships, in 2017 staged the very successful European Rowing Championships, in 2018 we hosted the best juniors at World Rowing Junior Championships.

We are delighted that in July 2021 the best U23 athletes are returning to Račice for their world championships once again.

I hope athletes, coaches and spectators will enjoy this World Rowing U23 Championships and I even look forward to seeing them back again in 2022 when Labe Arena in Račice will host World Rowing Championships.



Yours in Sport,  
**Dušan Macháček**

President of the Czech Rowing Association & Organizing Committee

# Welcome



## Czech Republic

The **Czech Republic** is a country in the heart of Europe. With 78 886 km<sup>2</sup> and more than 10 million inhabitants, it combines the cultures of East and West to truly deserve the label Central Europe.

The history of the **Czech Republic**, in ancient times called Bohemia, is long and fascinating. During the times of the famous emperor Charles IV, Bohemia was the cultural centre of Europe. In the 20th century, Bohemia joined with Slovakia to form Czechoslovakia; a country still often associated with the Czech Republic and the prestige of a superpower in sports. After it became independent in 1992, the **Czech Republic** continued to serve as a bridge between Eastern and Western Europe.

Besides history and historical monuments, the Czech Republic attracts millions of visitors every year for its rare culture. Prague is one of the most beautiful cities in Europe. The **Czech Republic** maintains a worldwide reputation for exceptional beer, traditional dishes or Czech glass that is as admired in the United States as in China or South Africa.

Finally, in sport, the Czech Republic is home to many top teams and athletes. Especially in rowing, the Czechs are among the most successful nations, with world champion and triple medal winner from the 2008, 2012 and 2016 Olympics **Ondřej Synek** and gold medal winner from 2012 Olympics **Miroslava Topinková-Knapková**.

# Czech Republic





Czech Republic

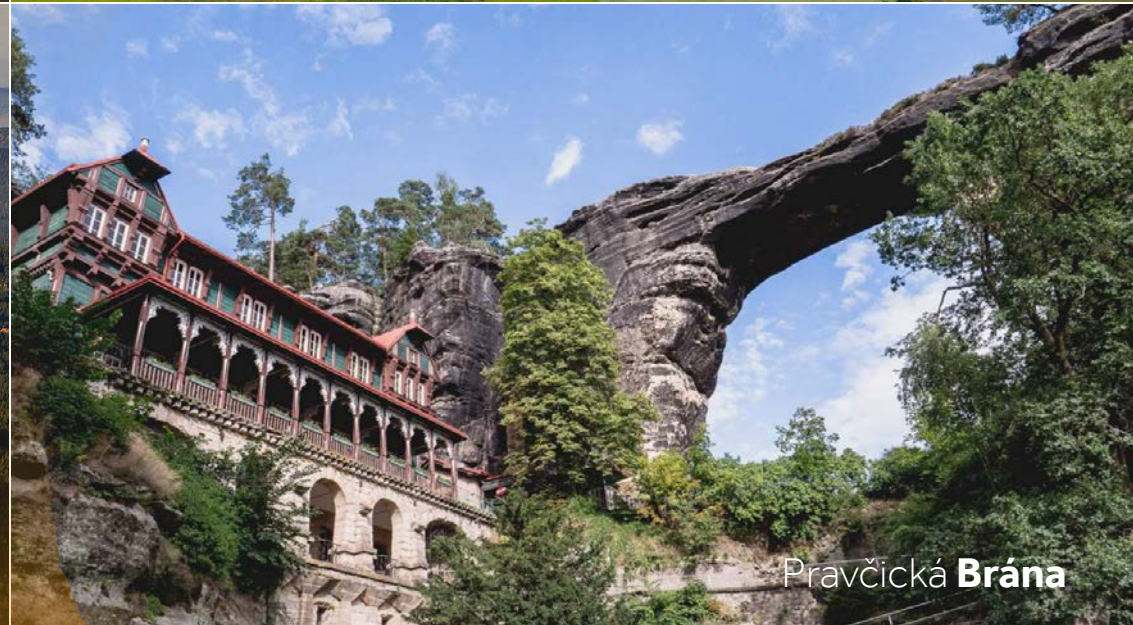
Prague



Hill Říp



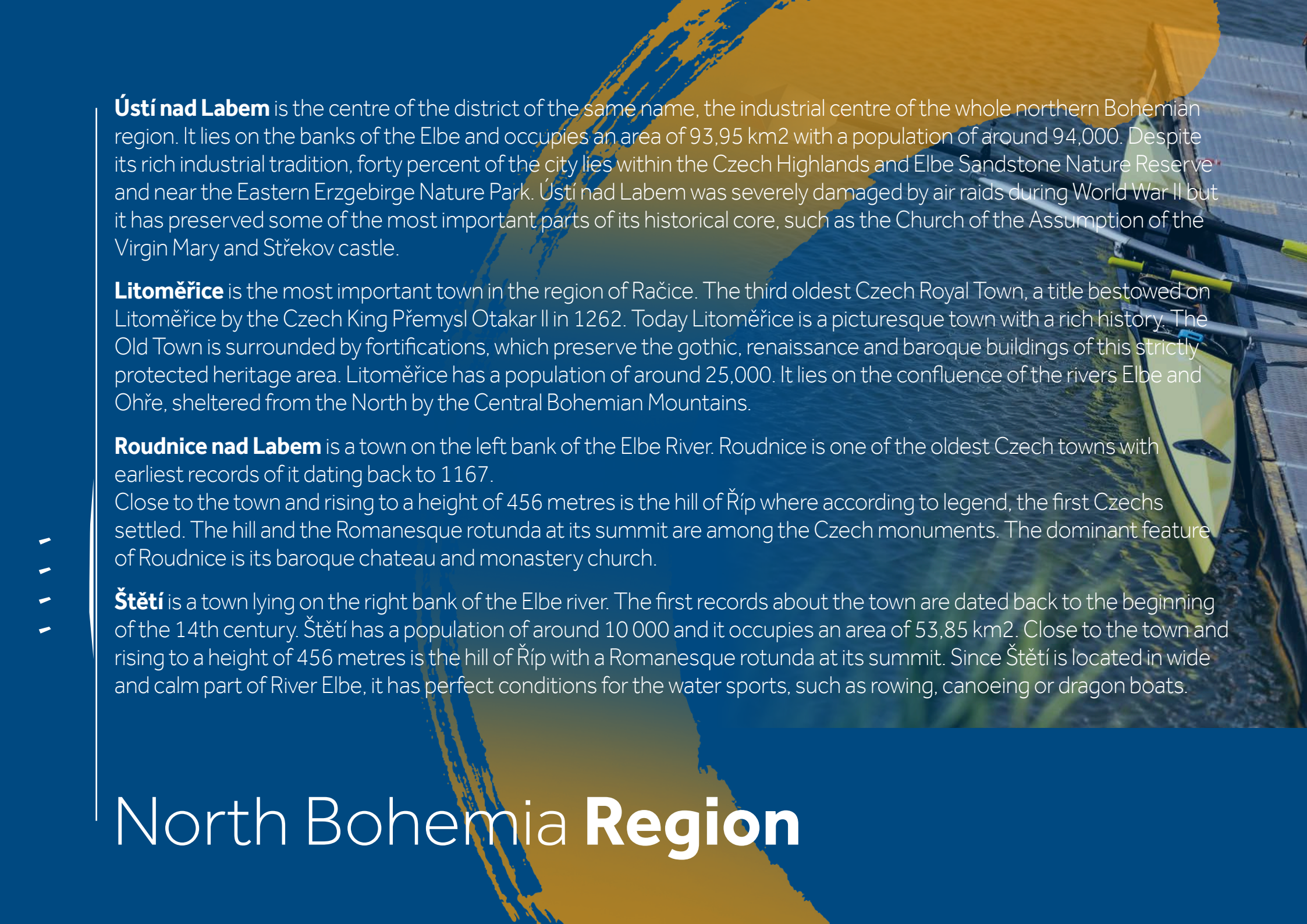
Liberec, Ještěd



Pravčická Brána

Czech Republic





**Ústí nad Labem** is the centre of the district of the same name, the industrial centre of the whole northern Bohemian region. It lies on the banks of the Elbe and occupies an area of 93,95 km<sup>2</sup> with a population of around 94,000. Despite its rich industrial tradition, forty percent of the city lies within the Czech Highlands and Elbe Sandstone Nature Reserve and near the Eastern Erzgebirge Nature Park. Ústí nad Labem was severely damaged by air raids during World War II but it has preserved some of the most important parts of its historical core, such as the Church of the Assumption of the Virgin Mary and Střekov castle.

**Litoměřice** is the most important town in the region of Račice. The third oldest Czech Royal Town, a title bestowed on Litoměřice by the Czech King Přemysl Otakar II in 1262. Today Litoměřice is a picturesque town with a rich history. The Old Town is surrounded by fortifications, which preserve the gothic, renaissance and baroque buildings of this strictly protected heritage area. Litoměřice has a population of around 25,000. It lies on the confluence of the rivers Elbe and Ohře, sheltered from the North by the Central Bohemian Mountains.

**Roudnice nad Labem** is a town on the left bank of the Elbe River. Roudnice is one of the oldest Czech towns with earliest records of it dating back to 1167.

Close to the town and rising to a height of 456 metres is the hill of Říp where according to legend, the first Czechs settled. The hill and the Romanesque rotunda at its summit are among the Czech monuments. The dominant feature of Roudnice is its baroque chateau and monastery church.

**Štětí** is a town lying on the right bank of the Elbe river. The first records about the town are dated back to the beginning of the 14th century. Štětí has a population of around 10 000 and it occupies an area of 53,85 km<sup>2</sup>. Close to the town and rising to a height of 456 metres is the hill of Říp with a Romanesque rotunda at its summit. Since Štětí is located in wide and calm part of River Elbe, it has perfect conditions for the water sports, such as rowing, canoeing or dragon boats.

## North Bohemia **Region**





North Bohemia **Region**

Ústí nad Labem



Litoměřice



Roudnice nad Labem



Štětí

North Bohemia **Region**



## The Venue

### Technical parameters of the regatta course

- total length of the artificial water channel is 2,350 m
- total width is 130 m (8 lanes of 12.5 m width)
- depth of the channel is about 2.5 m
- total area of regatta course is 73 hectares
- asphalt road around the channel 5 km long
- 6 pontoons

### Finish Tower

Provides the perfect conditions for all activities connected with race operations.

- six floors
- air conditioned
- total area of 600 m<sup>2</sup>
- timing and operations centre
- FISA, Jury office
- VIP meeting room with observation deck on the top floor

# The Venue





## The Venue

### Spectator area

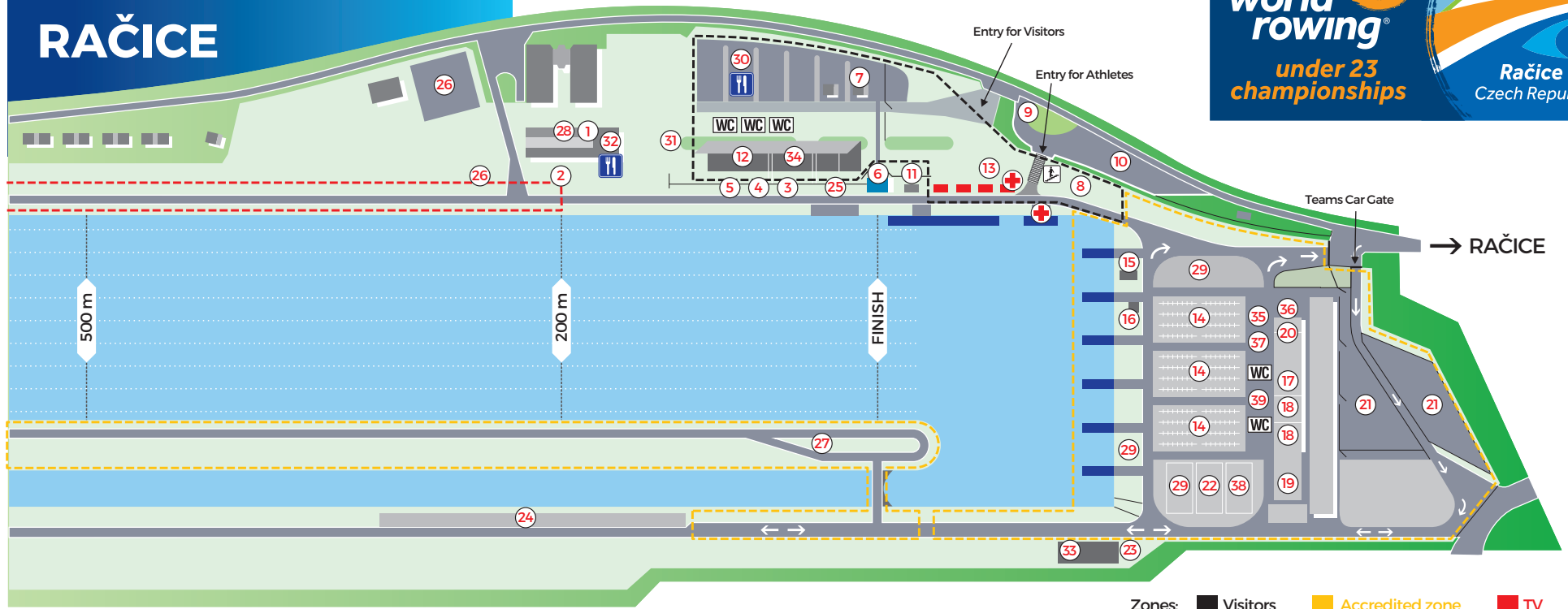
- grandstands for up to 4,000 spectators
- parking facility with large capacity
- food and beverage sales points
- information services (including a Souvenir Programme and daily results and starters list summaries, giant TV monitor)
- merchandising and marketplace
- medical services
- banking services
- grandstands with wheelchair access
- ceremonies in front of grandstands



The Venue



# REGATTA VENUE RAČICE



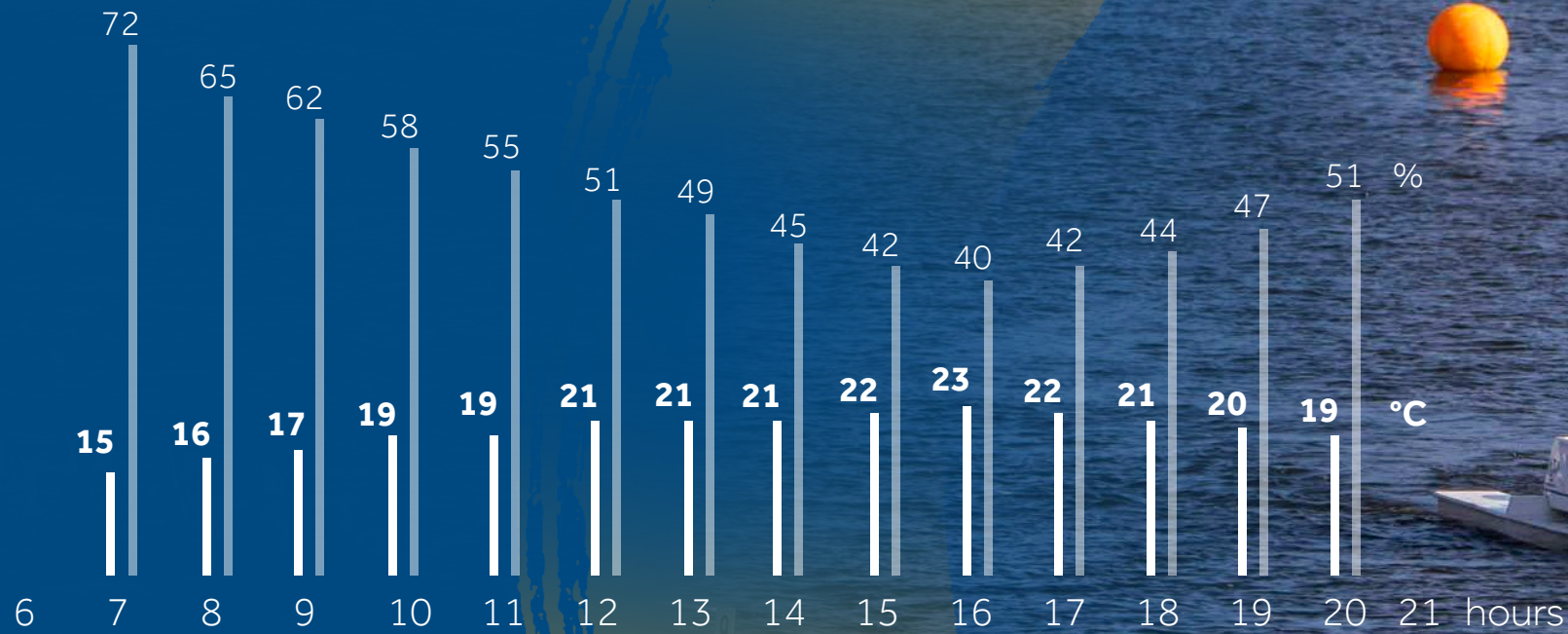
- |                            |  |                                |                                    |                                       |
|----------------------------|--|--------------------------------|------------------------------------|---------------------------------------|
| <b>1</b> Accreditation     | <b>9</b> Transport Office                      | <b>17</b> Team Info            | <b>25</b> Team Managers Work Space | <b>33</b> Team Managers Meeting Room  |
| <b>2</b> Catering Tent     | <b>10</b> Shuttle Bus Stop                     | <b>18</b> Changing Rooms       | <b>26</b> Parking Media, OC, FISA  | <b>34</b> Uncovered Grandstands       |
| <b>3</b> Media Centre      | <b>11</b> Mixed Zone                           | <b>19</b> Athletes Weighing    | <b>27</b> Bike Road for Coaches    | <b>35</b> Boat Washing                |
| <b>4</b> Medical Centre    | <b>12</b> FISA Family & Presidents Grandstands | <b>20</b> Boat Weighing        | <b>28</b> Administration Building  | <b>36</b> Bag Drop off + Lost & Found |
| <b>5</b> Doping Control    | <b>13</b> Water Rescue                         | <b>21</b> Parking for Teams    | <b>29</b> Boat Repair              | <b>37</b> Tap Drinking Water          |
| <b>6</b> Finish Tower      | <b>14</b> Boat Storage                         | <b>22</b> Area for Team Tents  | <b>30</b> Parking for Visitors     | <b>38</b> Ergometers                  |
| <b>7</b> Currency Exchange | <b>15</b> Control Commission                   | <b>23</b> Bike Rental          | <b>31</b> VIP Tent                 | <b>39</b> Athletes Grandstand         |
| <b>8</b> Market Place      | <b>16</b> Boat Numbers, GPS                    | <b>24</b> Parking for Trailers | <b>32</b> Labe Arena Restaurant    |                                       |

# Račice Regatta Venue



## Meteorological Data

Average **Temperature** (°C) and **Humidity** (%) for July



# Meteorological Data



## Sunrise and Sunset

Sunrise, sunset and day length for the region for each day of the two weeks period of the Championships.

<b>2021</b>	<b>Sunrise</b>	<b>Sunset</b>	<b>Day Length</b>
28. 6.	<b>4:54</b>	<b>21:18</b>	<b>16:24</b>
29. 6.	<b>4:55</b>	<b>21:18</b>	<b>16:23</b>
30. 6.	<b>4:55</b>	<b>21:17</b>	<b>16:22</b>
1. 7.	<b>4:55</b>	<b>21:17</b>	<b>16:22</b>
2. 7.	<b>4:56</b>	<b>21:17</b>	<b>16:20</b>
3. 7.	<b>4:57</b>	<b>21:16</b>	<b>16:19</b>
4. 7.	<b>4:58</b>	<b>21:16</b>	<b>16:19</b>
5. 7.	<b>4:58</b>	<b>21:15</b>	<b>16:18</b>
6. 7.	<b>4:59</b>	<b>21:15</b>	<b>16:15</b>
7. 7.	<b>5:00</b>	<b>21:14</b>	<b>16:14</b>
8. 7.	<b>5:01</b>	<b>21:14</b>	<b>16:12</b>
9. 7.	<b>5:02</b>	<b>21:13</b>	<b>16:11</b>
10. 7.	<b>5:03</b>	<b>21:12</b>	<b>16:09</b>
11. 7.	<b>5:04</b>	<b>21:12</b>	<b>16:07</b>
12. 7.	<b>5:05</b>	<b>21:11</b>	<b>16:06</b>

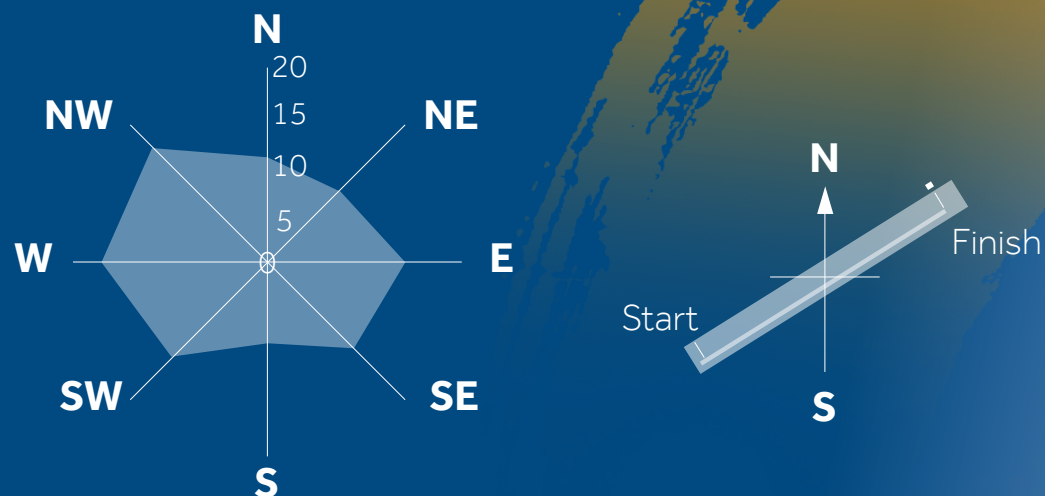


# Sunrise and Sunset



## Wind

Graphic view of how wind speed and direction are typically distributed in **Račice in July**.



### Wind Direction

N	NE	E	SE	S	SW	W	NW	calm
11,5	9,4	12	10,7	8,2	13,8	16,6	17,6	0,2

### Wind Speed (m/s)

calm	0 – 1	1 – 4	4 – 9	> 9
0,2 %	34,1 %	53,9 %	11,6 %	0,2 %

# Wind



## Accommodation

### Deadlines

- Accommodation must be booked through the Organizing Committee before 15. 3. 2021.
- A deposit of 40% of total amount is required before 31. 3. 2021.
- The remaining balance must be paid by 31. 5. 2021 at latest.

### Cancellation Policy

- Notification before 15. 3. 2021 – no cancellation fee.
- Notification from 16. 3. 2021 to 31. 5. 2021 – 50% refund of the total invoiced amount.
- Notification after 31. 5. 2021 – no refund.

### Transport and Meals

The price includes accommodation with full board, shuttle service between the venue and official hotels and Prague's airport transfers.

Breakfast and dinner are provided at the hotels, lunch is provided at the venue or at the hotels.



Accreditation and Accommodation

**Lucie Makovičková**

e-mail: [makovickova@rowingracice.com](mailto:makovickova@rowingracice.com)

# Accommodation



## List of Hotels, Price List

Category	Hotel Name	Town	Distance (km)	Driving (min)	No. of single rooms	Single rate	Number of * twin rooms	Double rate per person	No. of multibed rooms	Multibed rate per person
**** EXCLUSIVE	DUO	Prague	52	45	50	€ 170,00	200	€ 135	0	€ 0
***STANDARD	REGATTA	Račice Venue	0	0	0	€ 145,00	20	€ 120	0	€ 0
	SKIF	Račice Venue	0	0	2	€ 145,00	22	€ 120	0	€ 0
	ROWING	Račice Venue	0	0	0	€ 145,00	20	€ 120	0	€ 0
	SPORT	Štětí	30	40	2	€ 145,00	28	€ 120	0	€ 0
	OÁZA	Štětí	31	40	0	€ 145,00	12	€ 120	0	€ 0
	LINDŮV DVŮR	Hořtka	25	35	0	€ 145,00	20	€ 120	0	€ 0
	MAGNOLIA	Roudnice nad Labem	10	15	4	€ 145,00	29	€ 120	0	€ 0
	LUDMILA	Mělník	22	30	27	€ 145,00	40	€ 120	0	€ 0
	OLYMPIONIK	Mělník	18	25	6	€ 145,00	19	€ 120	0	€ 0
	ROOSEVELT	Litoměřice	25	35	11	€ 145,00	17	€ 120	0	€ 0
	KOLIBA	Litoměřice	26	35	0	€ 145,00	30	€ 120	0	€ 0
	PARKHOTEL	Terezín	27	35	3	€ 145,00	21	€ 120	0	€ 0
	SPORT	Kralupy nad Vltavou	35	40	0	€ 145,00	70	€ 120	0	€ 0
** ECONOMY	SCULL	Račice Venue	0	0	0	€ 135,00	0	€ 110	5	€ 105
	VERONIKA	Račice	0	0	0	€ 135,00	0	€ 110	2	€ 105
	BOARDING HOUSE	Štětí	30	40	0	€ 135,00	24	€ 110	0	€ 105
	U LIŠKY	Hořtka	25	35	3	€ 135,00	26	€ 110	0	€ 105
	LABE	Litoměřice	25	35	0	€ 135,00	20	€ 110	10	€ 105
LOW COSTS	REGATTA	Račice Venue	0	0	0	€ 105,00	0	€ 95	20	€ 90

\* All twin rooms can be used as single rooms.

# Hotels



## How to Get to Račice

**By Train:** Hněvice is a regional railway station 1,5 km from Račice and on the main line Prague - Dresden

**By Road:** Račice is situated 12 km from the motorway D8 from Prague to Teplice, exit 29 - Roudnice n./L.

**By Air:** Prague - Václav Havel International Airport (PRG) is approximately 67 km by road from Račice



# How to Get to Račice



## Additional Information

### Visa Requirements

The Czech Republic is part of the European Union (EU) and belongs to the Schengen Area. Many countries enjoy visa-free entry to the Czech Republic. However, citizens from some non-EU countries are required to have a valid visa when travelling to the Schengen Area.

If a visa is required, be sure to apply at least a month before your visit.

More information on entrance to the country can be found on the website:

<http://www.mvcr.cz/mvcren/web-useful-information.aspx>.

If you need a letter of invitation, please contact the Organizing Committee: [johanek@veslo.cz](mailto:johanek@veslo.cz)

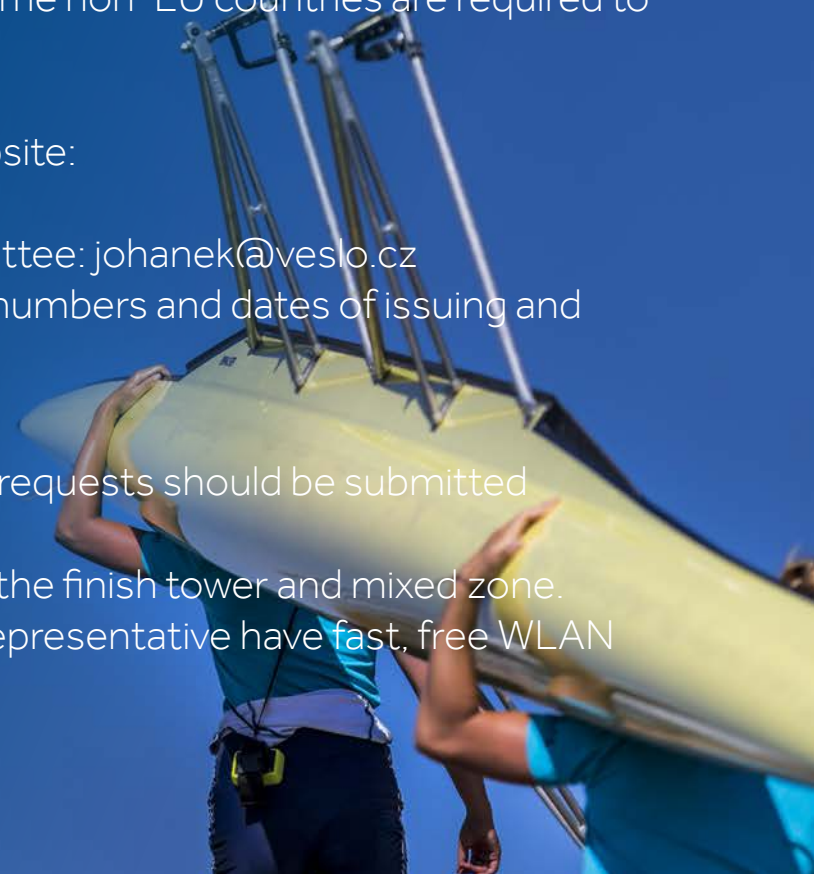
In that case, please provide the following details: full names, passport numbers and dates of issuing and expiry, dates of birth and relevant travel information.

### Media

Media accreditation will open in early 2021 and all media accreditation requests should be submitted through FISA at <http://www.worldrowing.com/mediacenter/>.

The media centre will be located directly at the Račice venue, close to the finish tower and mixed zone.

The media grandstand will be also available. In all media areas, media representative have fast, free WLAN connection (optional LAN for photographers).



# Additional Information



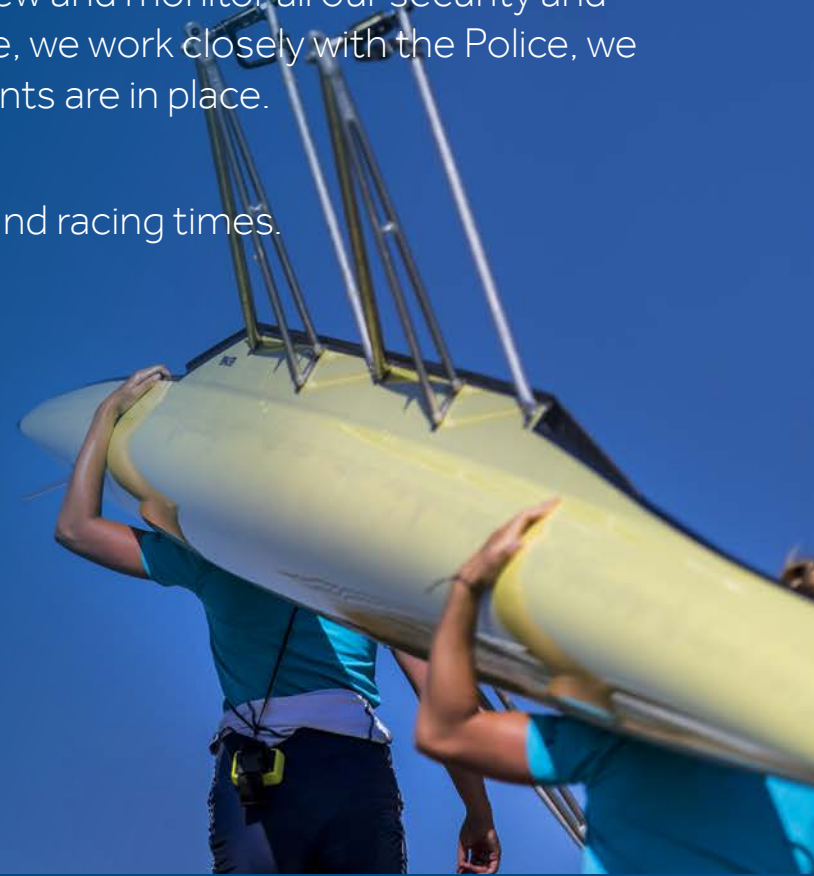
## **Additional Information**

### **Security**

Safety is always the absolute utmost importance to us. We want to ensure all participants of the event have an enjoyable experience and that they remain safe. We constantly review and monitor all our security and safety procedures across the venue. There is 24 hours security service, we work closely with the Police, we ensure the appropriate access control, security checks and requirements are in place.

### **First Aid Points and Rescue**

First aid and rescue service will be at the venue during official training and racing times. The nearest hospital is 12 km from the venue in Roudnice and Labem.



Additional **Information**



## Hosting Experience

- 1986 World Rowing Junior Championships
- 1993 World Rowing Championships
- 2009 World Rowing Under 23 Championships
- 2009 ICF Canoe Sprint World Cup
- 2010 World Rowing Junior Championships
- 2011 ICF Canoe Sprint World Cup
- 2013 ICF Canoe Sprint World Cup
- 2015 European Canoe Sprint Championships
- 2015 European Rowing Junior Championships
- 2016 ICF Canoe Sprint World Cup
- 2017 European Rowing Championships
- 2017 ICF Canoe Sprint World Championships
- 2018 World Rowing Junior Championships
- 2019 European Canoe Sprint Junior + U23 Championships



ČESKÝ VESLAŘSKÝ SVAZ  
CZECH ROWING ASSOCIATION

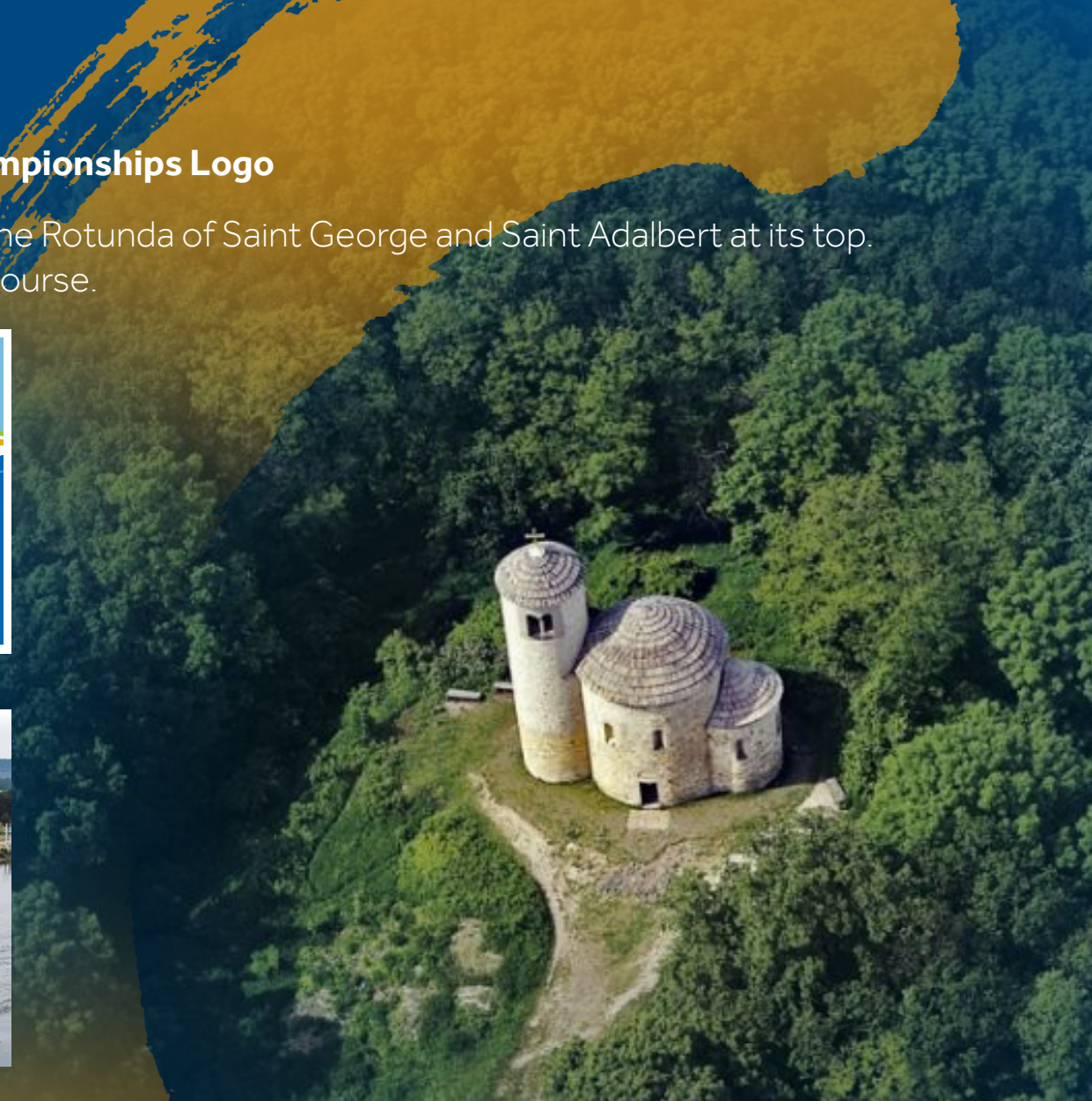
# Hosting Experience





## Inspiration for the 2022 World Rowing Championships Logo

The logo is inspired by the mountain Říp and the Rotunda of Saint George and Saint Adalbert at its top. Říp Mountain is in sight from Račice Regatta Course.



# Inspiration for the 2022 Logo



Thank You



**CZECH ROWING ASSOCIATION**

Zátokova 100/2 | 160 17 Prague 6 | Czech Republic | [www.veslo.cz](http://www.veslo.cz) | [info@veslo.cz](mailto:info@veslo.cz)

**THANK YOU FOR YOUR ATTENTION AND LOOKING FORWARD TO SEEING YOU IN RAČICE 2021**

Thank You